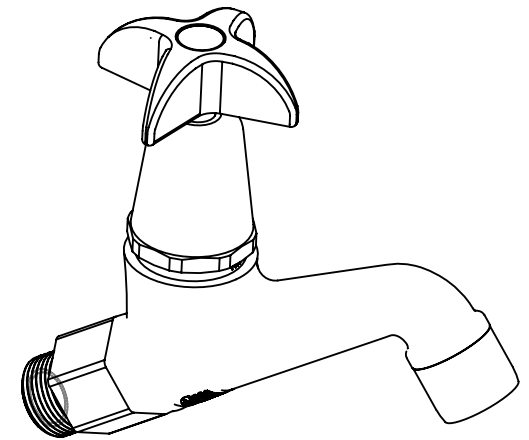
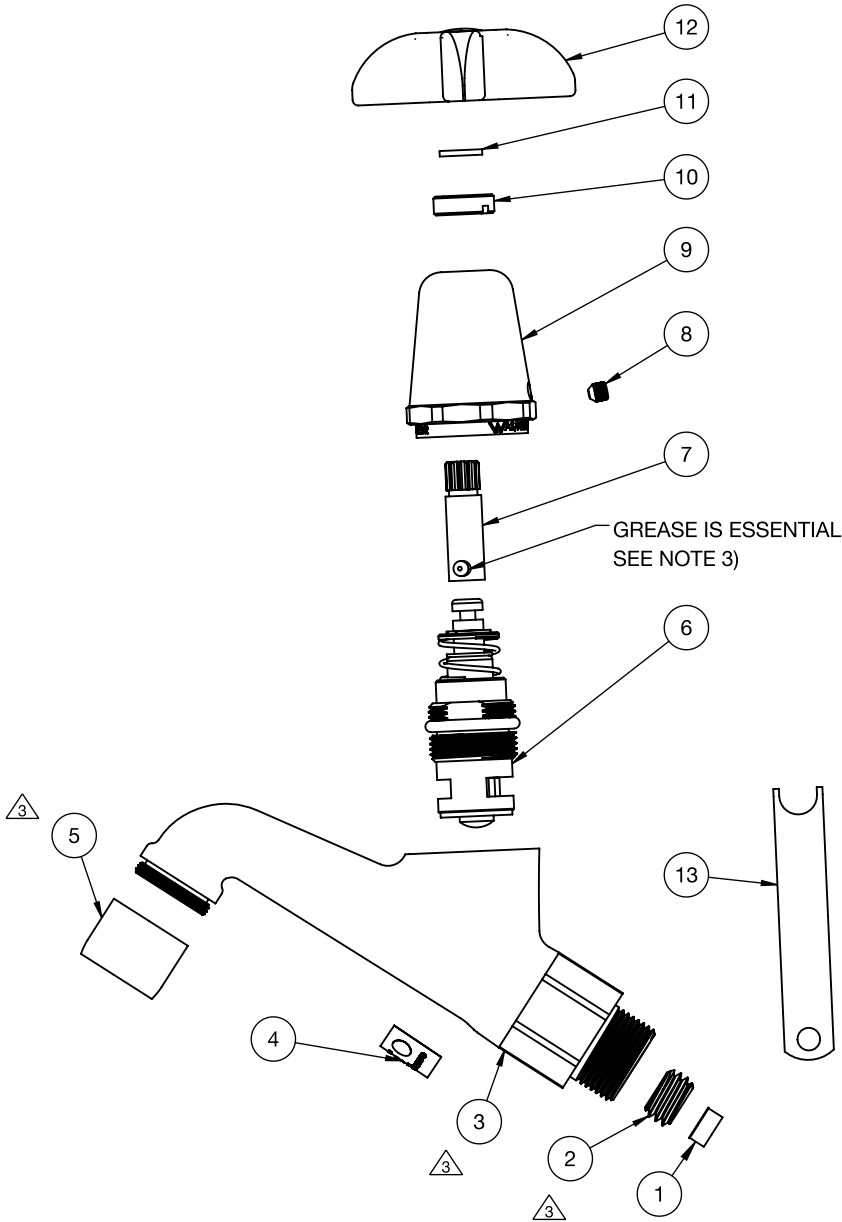


ITEM	ITEM NO	DESCRIPTION	MATERIAL	QTY.
1	717701	MR05 CONSTANT FLOW REGULATOR (5LPM ONLY)[RED]	-	1
2	809331	BS FLOW RESTRICTOR HOUSING 9/16" BSW	C35200	1
3	800147CP	CP MI DELUXE BIB COCK BODY AER	C48600	1
4	703785	LABWARE STICKER 15 X 25MM GALVIN SPECIALISED	-	1
5	20016	CP AERATOR FEMALE M22x1 OPEN FLOW	C35200	1
6	809020	BS CAM OR LEVER ACTION TOP ASS LESS LOCKNUT AND HANDLE	-	1
7	802072CP	CP EXTENSION SPINDLE FOR CAM ACTION DRINK TAP	C38500	1
8	712647	ST/ST GRUB SCREW 3/16"x3/16" (304) PLAIN CUP-3/32" SOCKET HEX W/ COATED THREADS	ST/ST 304	1
9	805397	CP BONNET FOR CAM ACTION DRINK TAP	C38500	1
10	800742CP	CP VANDAL RESISTANT LOCKING RING M16 x 1	C38500	1
11	709014	BS 'C' CIRCLIP FOR VANDAL RESISTANT HANDLE	C38500	1
12	803759CP	CP VANDAL RESISTANT HANDLE AND BUTTON 'COLD' (NO LOCK RING)	-	1
13	709025	SS KEY SPANNER FOR VANDAL RESISTANT HANDLE	ST/ST 304	1



ASSEMBLY

NOTES:

- CHECK THAT SEAT DEPTH OF COCK BODY IS  $\frac{23.40}{23.01}$  PRIOR TO INSTALLING TOP ASSEMBLY.
- PRESSURE TEST AS SPECIFIED ON WORK ORDER.
- GREASE PIN (7) USING APPROVED GREASE TO ENSURE CAM ACTION IS SMOOTH, REFER TO FORM 09-01.02. APPLY GENEROUS AMOUNTS OF GREASE ONTO CAM FACE.

MATERIAL:#	REF	DESCRIPTION	DATE	APPD
REFER TO BOM	0	REWORK IN SWI BOM UPDATE	09/09/2020	BG
	2	ADD FORM REFERENCE	15/10/2008	P/G
	1	ADD STICKER AND SCREW	10/12/2006	P/G
	0	APPROVED FOR PRODUCTION	25/05/2005	P/G

FINISH	CHROME
UNLESS OTHERWISE STATED ALL TOLERANCES	
X	±1.0
X	±0.1
XX	±0.05

410 VICTORIA RD MALAGA WA. AEN: 98 98 719 982	the mark of reliability
IF IN DOUBT ASK TITLE	EZY-TWIST OP-BS CAM ACTION DELUXE BIB TAP - COLD
DRN 19/09/2005	T.FITZGERALD
CKD JR	MANUFACTURED TO: AS N/A
APPD BG	SCALE NOT TO SCALE
ISSUED	SHEET 1 OF 1
	DRAWING NO 35710